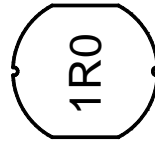
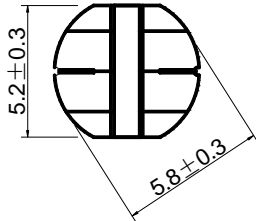


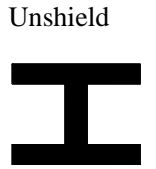
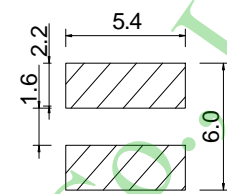
PD53-Series

Inductance Range: 1.0μH~330μH
Temperature Range: -40℃~+125℃

DIMENSIONS(mm)



LAND PATTERNS(mm) CONSTRUCTION



FEATURES:

- ★Quantity / Reel: 2000pcs
- ★Small products, Round 5.8mm, Height 3.2mm Type.
- ★The use of carrier tape package for SMT reflow soldering process
- ★Widely use in DC-DC converter/LCD TV/Notebook/ PDA/MP3 & MP4 player/Digital camera/DVD etc.
- ★Design to customer requiremen

RoHS Compliant(SGS Certified Result)

Pb	Cd	Cr+6	PBBs	PBDEs
<1000ppm	ND	ND	ND	ND

Electrical Characteristics:

Part Number	Test Condition	Inductance (μH)	Tolerance (%)	D.C.R(Ω) Max.	Rated Current(A)
PD53-1R0M	100KHz/0.3V	1.0	±20	30m	4.50
PD53-1R5M	100KHz/0.3V	1.5	±20	30m	4.10
PD53-1R8M	100KHz/0.3V	1.8	±20	30m	3.70
PD53-2R2M	100KHz/0.3V	2.2	±20	30m	3.50
PD53-3R3M	100KHz/0.3V	3.3	±20	50m	2.80
PD53-3R9M	100KHz/0.3V	3.9	±20	60m	2.60
PD53-4R7M	100KHz/0.3V	4.7	±20	70m	2.50
PD53-5R6M	100KHz/0.3V	5.6	±20	80m	2.40
PD53-6R8M	100KHz/0.3V	6.8	±20	90m	2.20
PD53-8R2M	100KHz/0.3V	8.2	±20	100m	2.00
PD53-100K,M	1KHz/0.3V	10	±10,±20	120m	1.80
PD53-120K,M	1KHz/0.3V	12	±10,±20	130m	1.75
PD53-150K,M	1KHz/0.3V	15	±10,±20	150m	1.70
PD53-180K,M	1KHz/0.3V	18	±10,±20	180m	1.60
PD53-220K,M	1KHz/0.3V	22	±10,±20	220m	1.50
PD53-270K,M	1KHz/0.3V	27	±10,±20	240m	1.40
PD53-330K,M	1KHz/0.3V	33	±10,±20	300m	1.10
PD53-390K,M	1KHz/0.3V	39	±10,±20	400m	1.00
PD53-470K,M	1KHz/0.3V	47	±10,±20	430m	0.90
PD53-560K,M	1KHz/0.3V	56	±10,±20	500m	0.85
PD53-680K,M	1KHz/0.3V	68	±10,±20	0.60	0.80
PD53-820K,M	1KHz/0.3V	82	±10,±20	0.80	0.65
PD53-101K,M	1KHz/0.3V	100	±10,±20	0.90	0.60
PD53-121K,M	1KHz/0.3V	120	±10,±20	1.00	0.58
PD53-151K,M	1KHz/0.3V	150	±10,±20	1.30	0.43
PD53-181K,M	1KHz/0.3V	180	±10,±20	1.50	0.41
PD53-221K,M	1KHz/0.3V	220	±10,±20	2.00	0.38
PD53-271K,M	1KHz/0.3V	270	±10,±20	2.50	0.35
PD53-331K,M	1KHz/0.3V	330	±10,±20	3.20	0.28

- 1、 Inductance is measured with a LCR meter:HP4284A & 3532-50 or equivalent.
- 2、 D.C .R is measured with a Digital Multimeter TH2512B or equivalent.
- 3、 Rated Current: The rated current is the current at which the inductance decreases by 25% from the initial value or the temperature rise is ΔT=40℃ ,whichever is smaller(Ta=20℃).